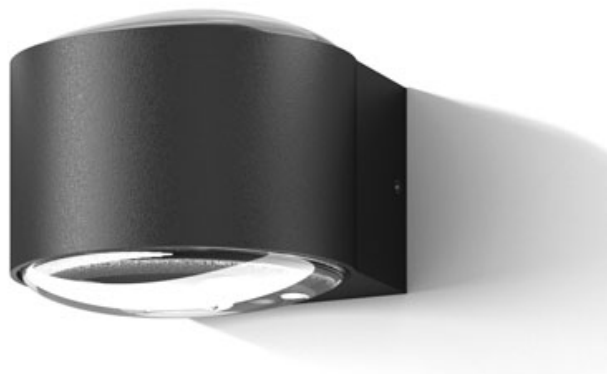




LAG-830A011F-DN



Wall Light round made of die-cast aluminium with integrated ON-OFF Driver, dark-grey powder-coating finish (RAL 7024), LED 9W, measurements Ø107mm x 121mm, height of the luminaire is 77mm, luminaires weight is approximately 1040g, CCT 3000K with an System Output of 950lm, decent color rendering at an index of CRI80, after a lifetime of 50000h min. 80% of the luminous flux with energy efficient EDISON LED Chips, 3 years warranty, beam characteristic with 100° beam angle, degree of housing protection according to DIN EN 60529 (IP65), Impact resistance of the luminaire is in the class IK07,

Brand

Neko

Designer

Neko

Type

Surface mounted

Electrical Characteristics

IP 65
220-240 VAC
11W W

Material

die-cast aluminium

Photometric Data

Beam Angle: 00° W
80

Downloads

[Instructions](#)

[Photometry](#)

Dimension

Light Temperature

3000K

Colour/Finish

Dark-Grey

